



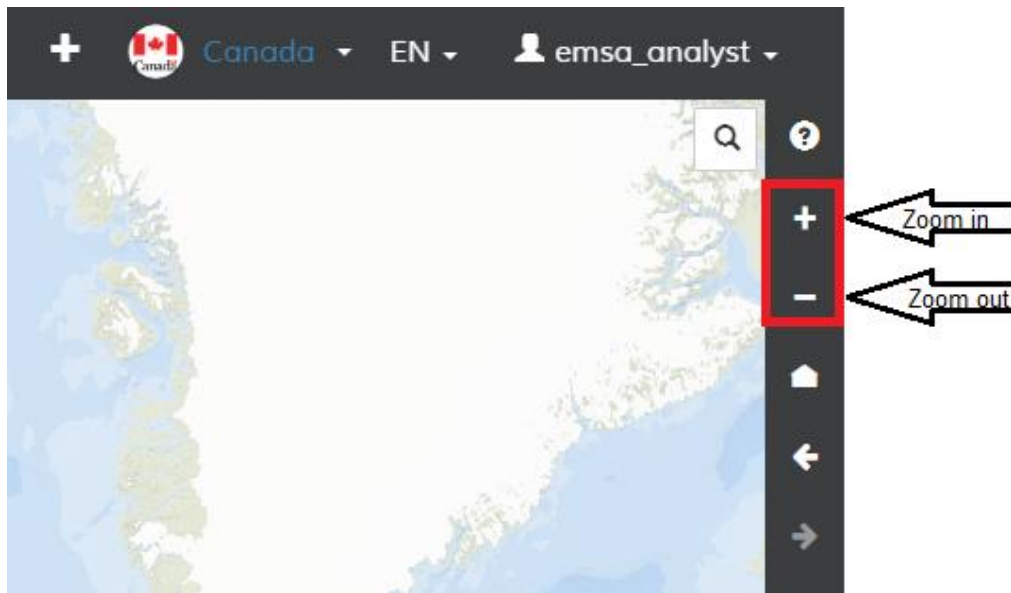
ZOOM IN / ZOOM OUT

The easiest way to zoom in or out of the map is by using the Mouse scroll wheel.



Scrolling forward will zoom in and scrolling backward will zoom out.

If your computer does not have an external mouse, or the mouse lacks a scroll wheel, then the toolbar will provide that functionality.



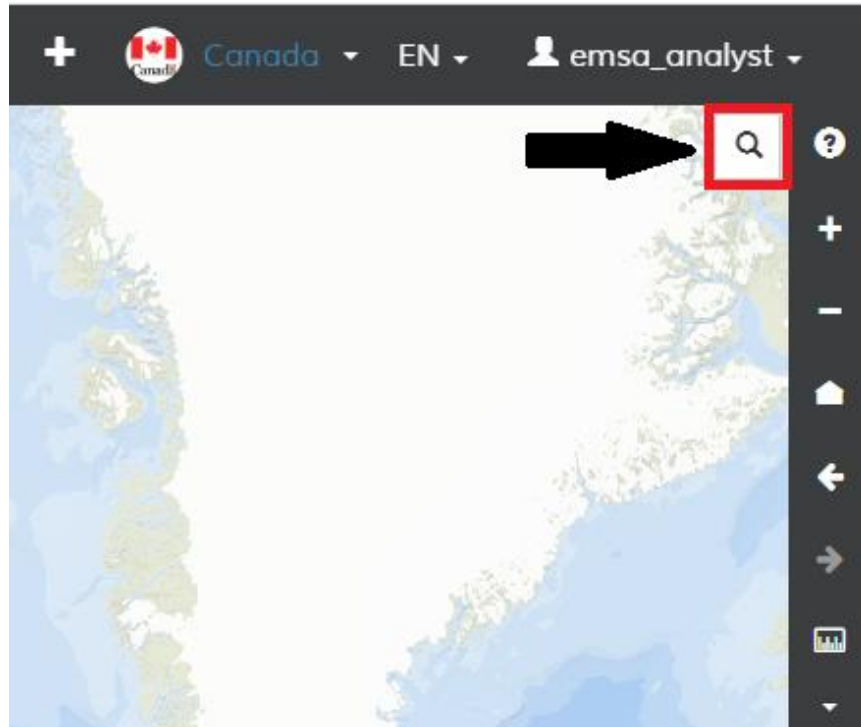
PAN (SCROLL)

To Pan or Scroll sideways, simply click and hold the left mouse button and drag sideways until the desired location, release the mouse when ready. The same result is achieved by clicking and holding down the mouse scroll wheel, then dragging sideways up to the desired location. Release the mouse wheel when ready.



SEARCH TOOL

The search tool helps you find and access specific places or sites of interest on the map.

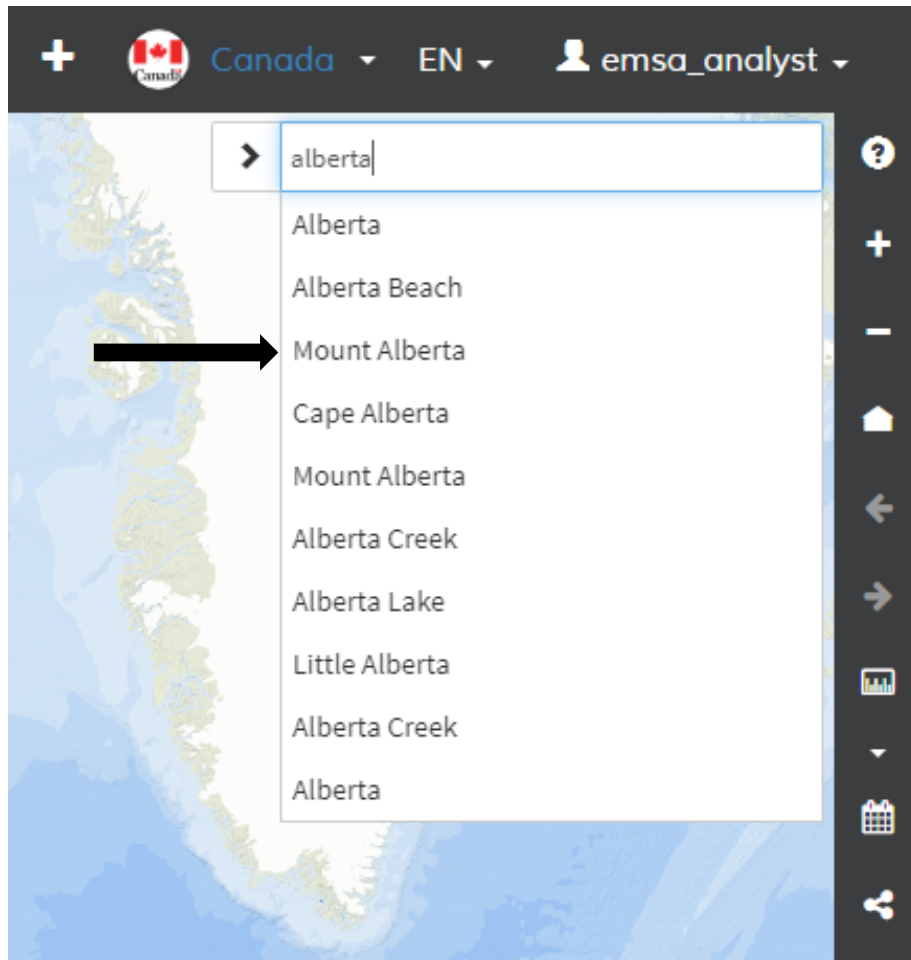


Click on the search tool, then type the location or place you want to find.

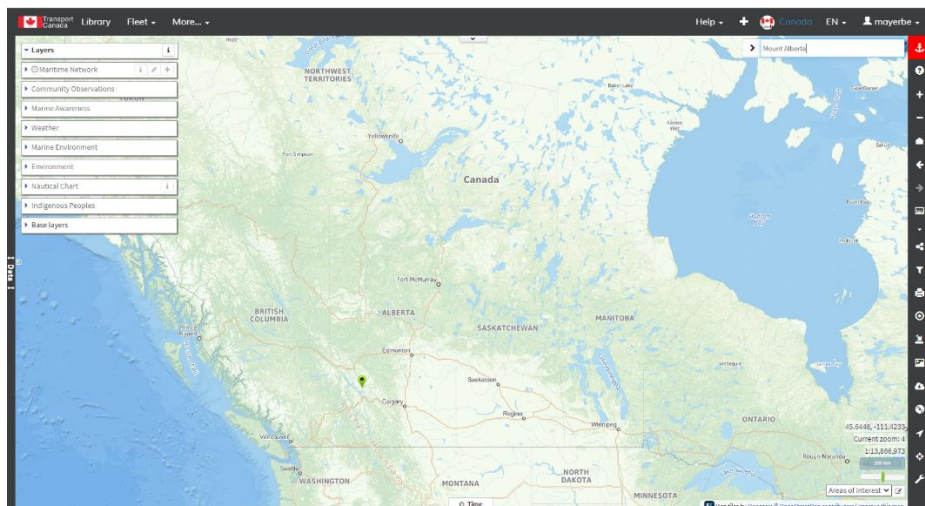
Because there will likely be several places with the same, or similar names, a list is provided where you can select the location you are interested in.



EMSA - Enhanced Maritime Situational Awareness



Click on the desired location and the map will be positioned accordingly. For example: Mount Alberta.

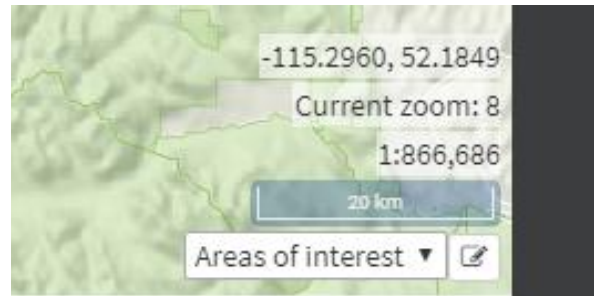




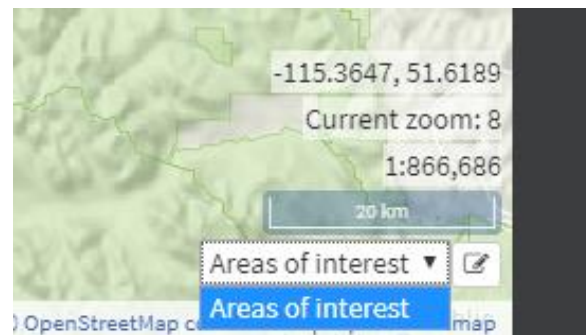
EMSA - Enhanced Maritime Situational Awareness

AREAS OF INTEREST.

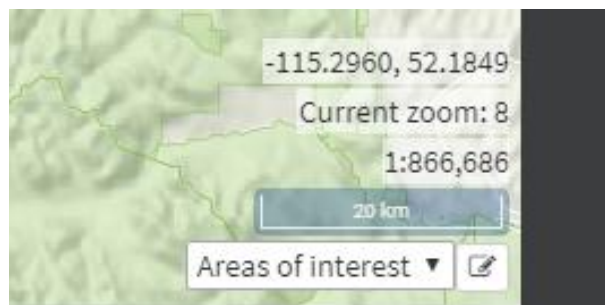
It may be useful to have not one but several areas of interest. This tool allows to bookmark specific places than can then be navigated easily. You will find this tool in the lower right corner of the map.



Initially the list is empty, when you click on the down arrow, nothing is shown, except the expression 'area of interest'.



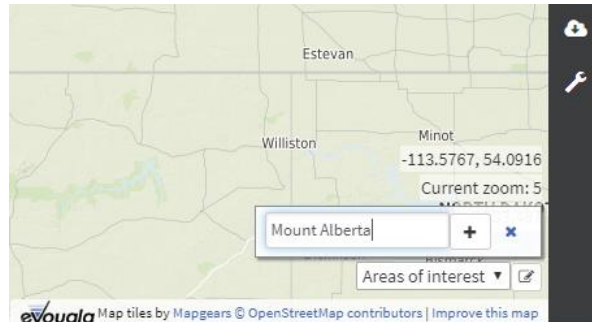
Let's start by adding a first area of interest. Because the map is already positioned in Mount Alberta, then you can save this one as the first Area. Click on the icon "Edit areas of interest"



Type the name you want to give the area of interest and click the "plus" sign. In this example we type "Mount Alberta".



EMSA - Enhanced Maritime Situational Awareness



Once the area has been successfully saved, it appears in the list, three new icons are displayed on the right side, “Rename the item”, “Set this item as your favorite” and “Delete the item”.



To see this icons in action, let’s add areas of interest.

Now let’s navigate to Oromocto River, either by panning with the mouse, or by using the Search tool (previously explained). Once positioned in the right place, use the New area of interest to save the new area to the list.

Finally, we can navigate and save ‘Langley Island’.

The list of areas of interest should look like this:



When you are ready to start using the tool, just click on the “x” to close the editing mode.

Now click in the down arrow of Areas of interest to start navigating the map.



EMSA - Enhanced Maritime Situational Awareness

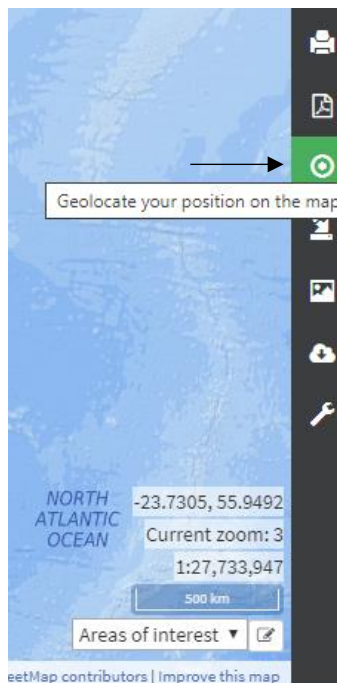


From now on, you can navigate easily to any of those places just clicking on its name. You can keep adding areas of interest, they can also be renamed or erased.

GEOLOCATION

This tool positions the map at your existing location. The accuracy can vary from a few meters to hundreds; it depends on many factors such as where you are located, how you are connected to the Internet, if you are using a mobile device with GPS or a desktop computer, etc.

It is a useful tool, and will at least give you a good approximation of your whereabouts.



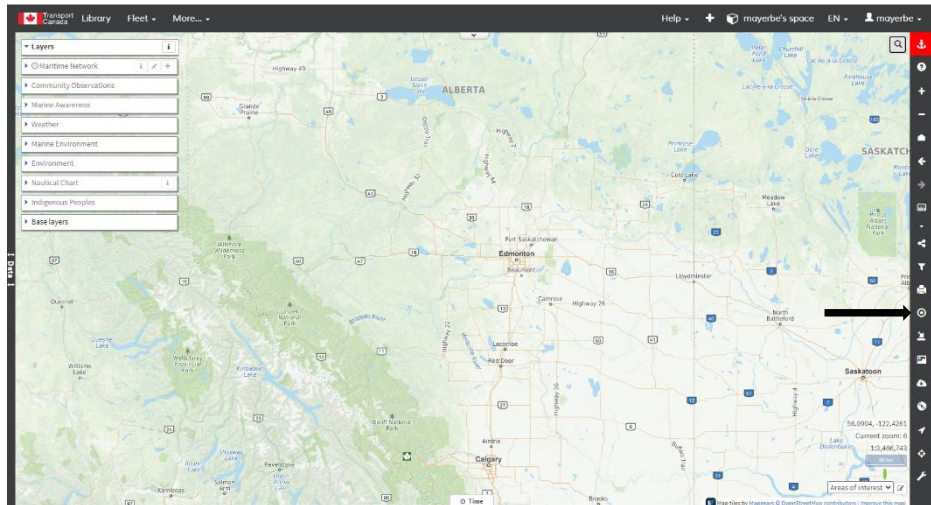
Center the map near Edmonton, Alberta, away from your real location.



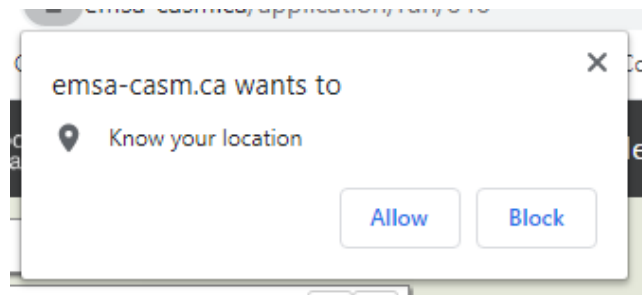
Transport
Canada



EMSA - Enhanced Maritime Situational Awareness



When you click the Geolocation tool, a popup message will request your authorization



If you click “Allow”, the map will center at your location approximately.

In our case, our location is Saint Canut, Mirabel, Province of Québec where the map is now centered.



Transport
Canada



EMSA - Enhanced Maritime Situational Awareness

