



EMSA - Enhanced Maritime Situational Awareness

GEOSPATIAL METADATA

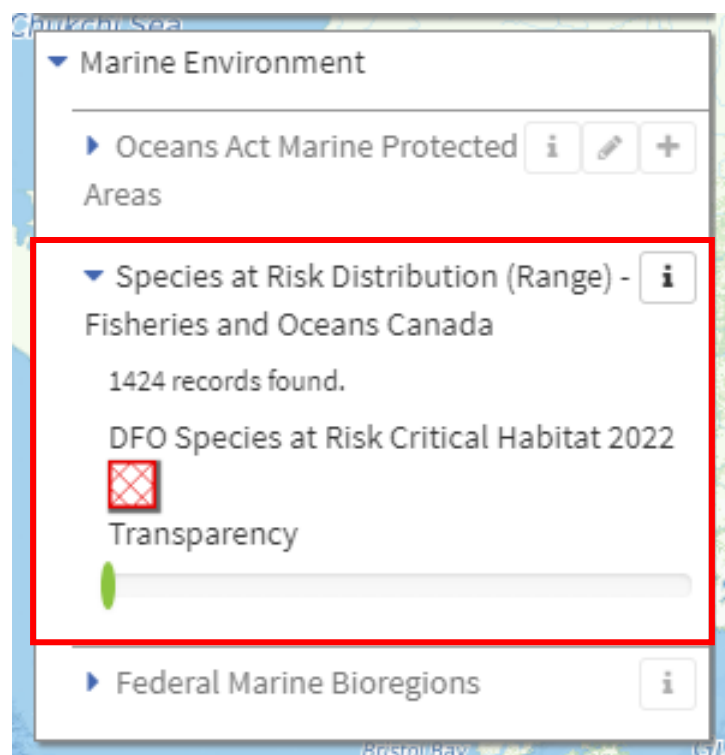
Geospatial metadata provides information about the identification, the extent, the quality, the spatial and temporal aspects, the content, the spatial reference, the portrayal, distribution, and other properties of spatial data and services

In Summary, geospatial metadata is the set of descriptors about the spatial data, for instance, you may wish to know what the extent of the data is, how it was obtained, who captured and processed the data, when it was obtained and updated, and so on.

Based on metadata you can assess the reliability and level of confidence about the data, let's say that you have two different spatial data sources about Canada's National Parks and one of them must be selected to appear on the map. Without metadata, it is a difficult decision, how can you decide which data source is more reliable and up to date.

ACCESSING METADATA AND PROPERTIES IN EMSA.

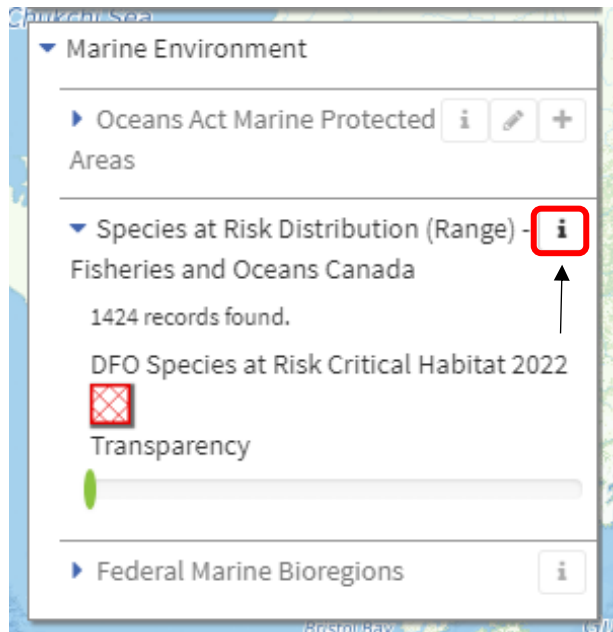
For the example, let's take a look at the "Species at Risk Distribution (Range) - Fisheries and Oceans Canada" layer.





EMSA - Enhanced Maritime Situational Awareness

First click on details:



After clicking on the 'i' icon, you have a window with "Properties" and "Metadata" tabs. "Data" tab is discussed in another training document.



EMSA - Enhanced Maritime Situational Awareness

DFO_SARA_Critical Habitat_Ecology / MPO_Espèces en péril (LEP) - Habitat Essentiel_Écologie

Properties Data Used by Metadata Terms of Use

ArcGIS

Data Source

Resource Id: 7482

Name: DFO_SARA_Critical Habitat_Ecology / MPO_Espèces en péril (LEP) - Habitat Essentiel_Écologie

Description: Critical habitat was assembled by SARA regional biologists and recovery teams. They are designed to support the protection and recovery of species listed as Extirpated, Endangered or Threatened under the Species at Risk Act. They are also described and displayed in species' Recovery Documents and Action Plans. Please note: there are different types of Critical Habitat descriptors. Descriptors (such as bounding box coordinates are not included in this dataset). Learn more or download this dataset from the Government of Canada's Open data portal.

Description: L'habitat essentiel a été assemblé par les biologistes régionaux des espèces en péril et les équipes de rétablissement. Ils ont pour but de soutenir la protection et le rétablissement des espèces inscrites comme étant en disparue du pays, en voie de disparition ou menacées conformément à la LEP. Ils sont également décrits et affichés dans les programmes de rétablissement et les plans d'action de ces espèces.

Remarque : il existe différents types de descripteurs d'habitat essentiel. Les descripteurs (comme les coordonnées de zone de délimitation) ne sont pas inclus dans cet ensemble de données.

Apprenez-en plus ou téléchargez cet ensemble de données à partir du portail de données ouvertes du gouvernement

Close

In the panel called “Properties” there are some metadata information such as the name and description of the data in English and French.

Finally, accessing the panel called “Metadata”, you can have some additional information. It is key to note that Metadata is properly organized and structured, hence easier to read.



EMSA - Enhanced Maritime Situational Awareness

DFO_SARA_Critical Habitat_Ecology / MPO_Espèces en péril (LEP) - Habitat Essentiel_Écologie

Properties Data Used by Metadata Terms of Use

* Name Critical Habitat of Species at Risk

Description The Species at Risk (SAR) Program is responsible for carrying out DFO's mandate under the Species at Risk Act (SARA) to protect, recover and conserve all listed aquatic

* Theme Environmental

Organisation Fisheries and Oceans Canada

Copyright Open Government Licence - Canada

Contact Fisheries and Oceans Canada

Language EN/FR

Email info@dfo-mpo.gc.ca

Web site <https://open.canada.ca/data/en/dataset/db177a8c-5d7d-49eb-8290-31e6a45d786c>

Close

Terms of use

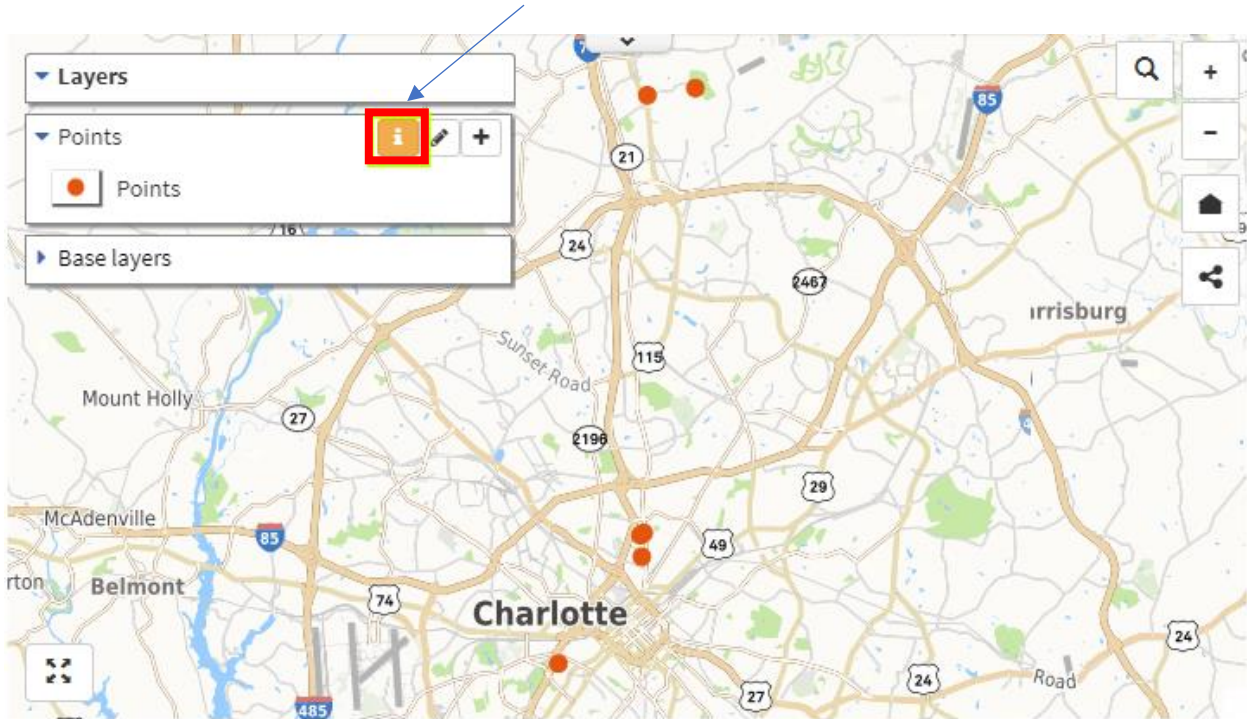
Terms of use may be defined on a data source. These terms are a non-binding way of informing users about relevant information pertaining to the data source, such as:

- Who owns the data (and their contact information)
- Intended use(s) of the data source
- The level of accuracy of the data

In a map or mapping application, you can identify if a data source has defined terms of use, since the 'i' icon button is orange.



EMSA - Enhanced Maritime Situational Awareness



To see the details of the terms of use, click on the 'i' button and in the window click on Terms of use tab to see its content

