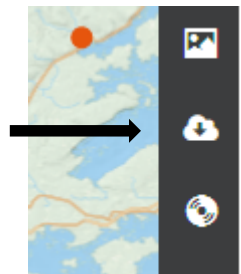




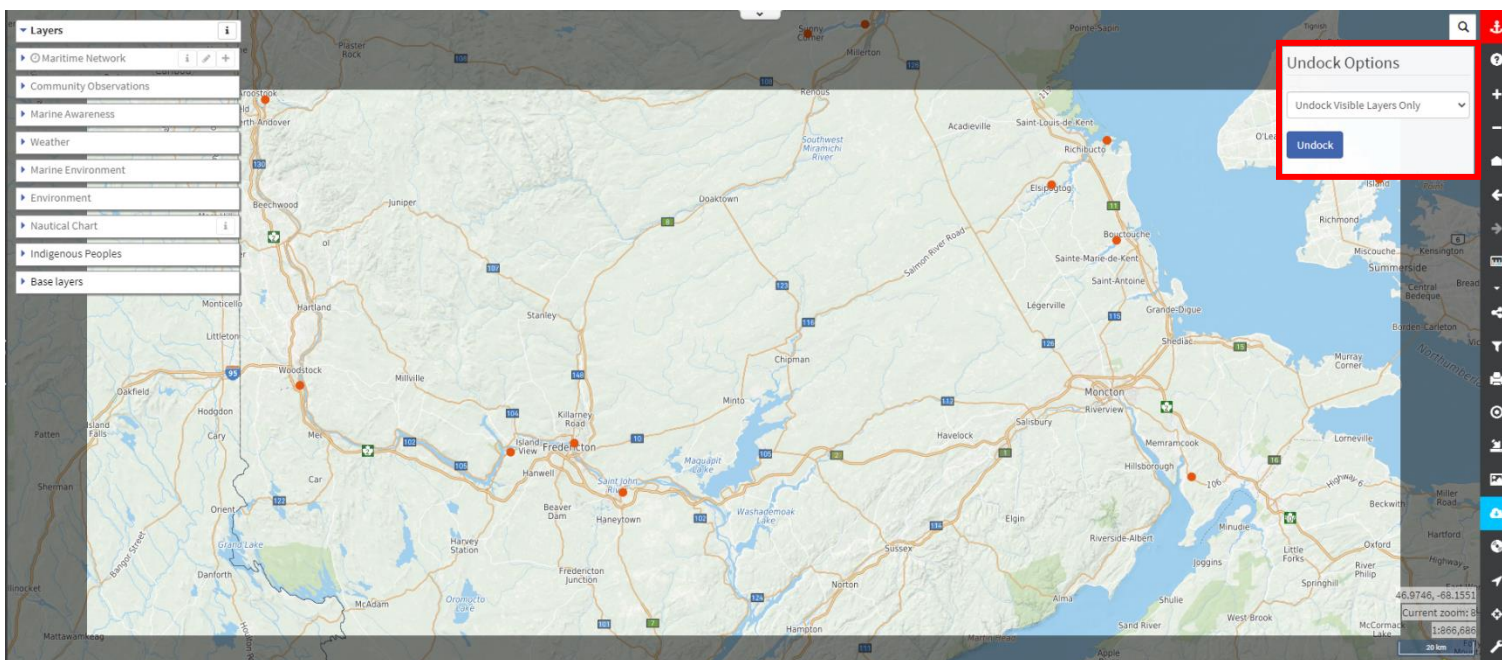
## EMSA - Enhanced Maritime Situational Awareness

### UNDOCK

EMSA may be used in offline mode. To do so, click on the “Undock” tool on the right-hand side of your screen.



A focus window will appear. You can pan and zoom in the map to get the desired area in the focus window.. In the Undock Options, you can select if you want to Undock Visible Layers Only or Undock All Layers, then click “Undock”.



Make sure the view is correct and that the appropriate layers are turned on.

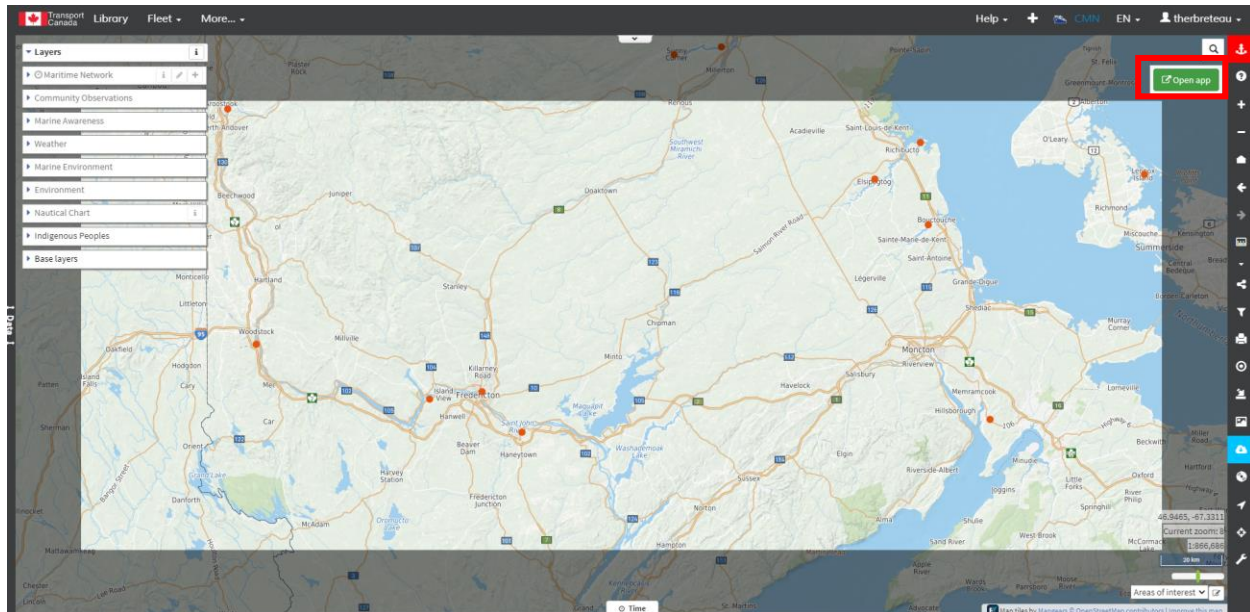
Please note the EMSA system cannot currently undock data that comes from Data Connection services (i.e. WMS, TMS, ArcGIS Service, etc.).

Click on the “Undock Visible Layers only”. For this tutorial, turn on the Community Observations layer. You may turn off other layers if you’d like.



## EMSA - Enhanced Maritime Situational Awareness

Click on the green “Open app” button in the top-right corner to open a new tab with the application in offline mode. You just created an offline application.



You can now use the application in offline mode, not connected from the Internet.

Notice that the viewing area is restricted to the exact area you selected, and you may only use the layers that were previously visible.

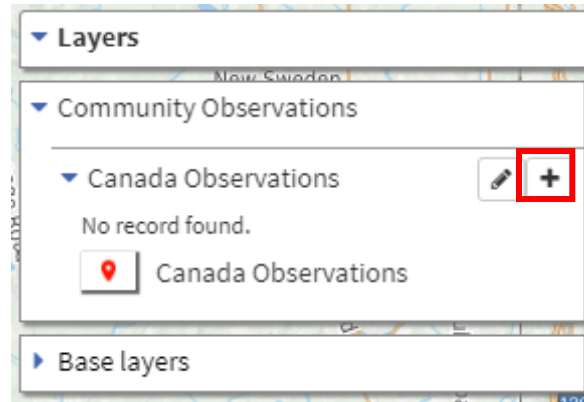
### MODIFY

You can make modifications like adding new observations that will later be synchronized when you save the application (dock).

Let's start by adding an observation in the Canada Observations layer, as we did in the “Editing Layers” tutorial. Click on the **+** icon.



EMSA - Enhanced Maritime Situational Awareness

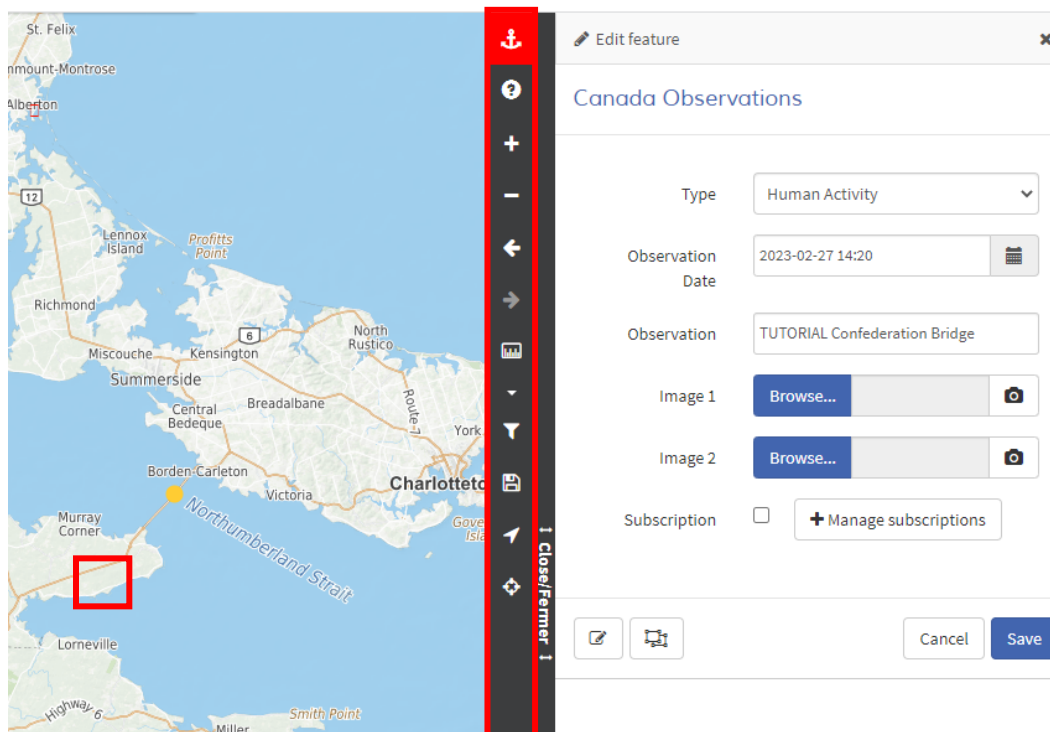


Click once on the map to place a new observation at the desired location. A window pane opens on the right-hand side of your screen. This pane is for the Canada Observation layer. Take note that every layer is different.

You may enter information such as the type of observation, observation date, observation, images and subscription.

The new observation is displayed.

You may also notice that the application tools changed while you're in offline mode.





EMSA - Enhanced Maritime Situational Awareness

Click the blue Save button to see the new point appear.

Canada Observations

Actions	Icon	Type	Observation Date	Observation	Image
		Vessel	2022-04-29 14:32	This is a PEI boat	View
		Human Activity	2023-02-27 14:20	TUTORIAL Confederation Bridge	

You may edit features that you saved. Click on the pencil button in the “Action” column.

Canada Observations

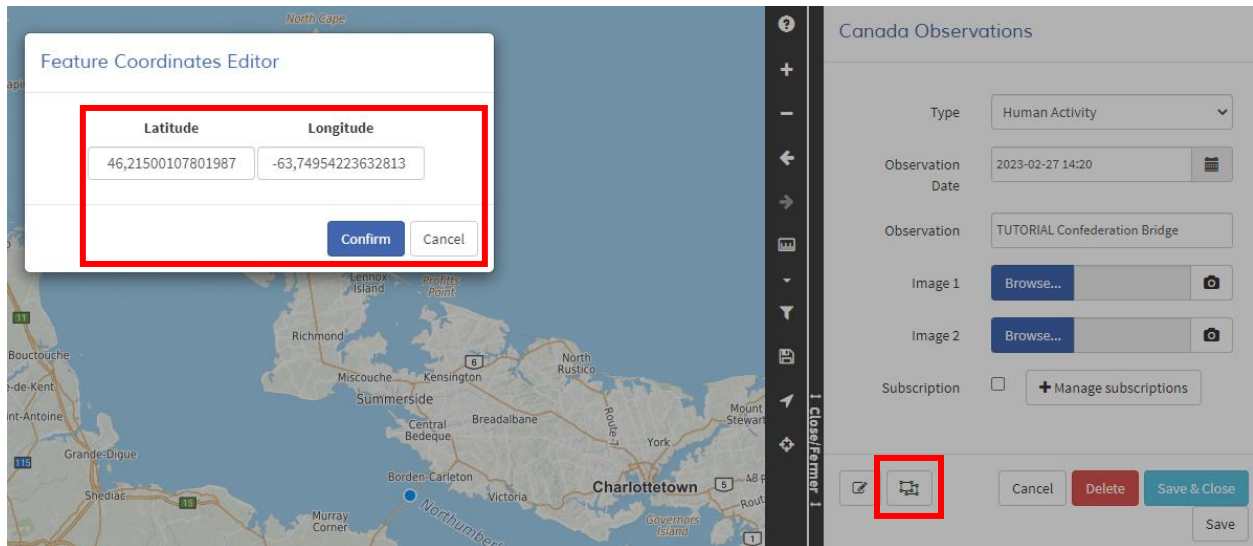
2 records found.

Actions	Icon	Type	Observation Date	Observation	Image
		Vessel	2022-04-29 14:32	This is a PEI boat	View
		Human Activity	2023-02-27 14:20	TUTORIAL Confederation Bridge	

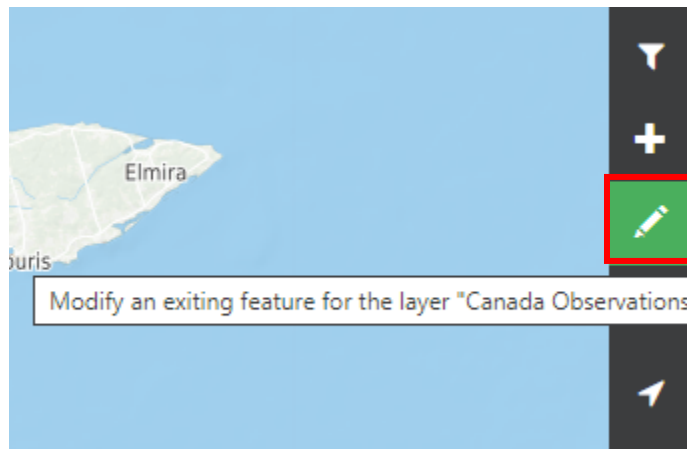
You may edit the coordinates of features if needed. When editing a feature, click on the rectangle left of the “Cancel” button. Change the latitude and longitude as needed and click “Confirm”.



### EMSA - Enhanced Maritime Situational Awareness



You may also click on the pencil on the right-hand side, then click on any feature to edit it.

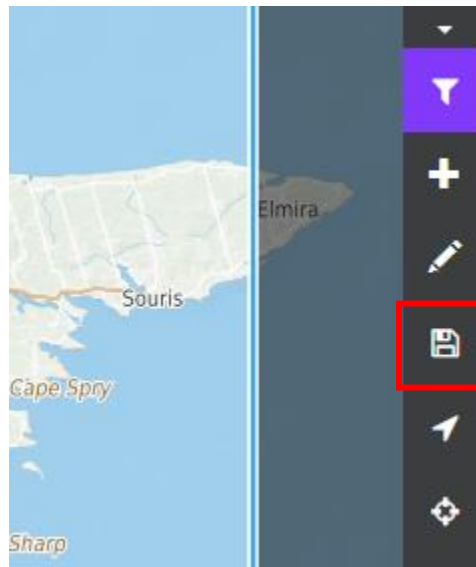


### DOCK

Once the observations have been created in your undocked application, you would need to save and end your offline session. Connect back to the Internet and Click on the “Dock the application” button.



EMSA - Enhanced Maritime Situational Awareness



A popup will show you the number of features you added / modified / deleted. Click the “Save changes and dock the application” Button. Wait a few seconds for the information to appear.

Dock the application

You made modifications to the data from this undocked application. Here's a summary of the changes that were made. Please click the button below to save the modifications made and dock the application.

- 2 new features were added
- 0 feature was modified
- 0 feature was deleted
- those changes were made to 1 data sources

You will get a popup letting you know the save was successful and the offline session will be terminated.



## EMSA - Enhanced Maritime Situational Awareness

### Dock the application

You made modifications to the data from this undocked application. Here's a summary of the changes that were made. Please click the button below to save the modifications made and dock the application.

- 2 new features were added
- 0 feature was modified
- 0 feature was deleted
- those changes were made to 1 data sources

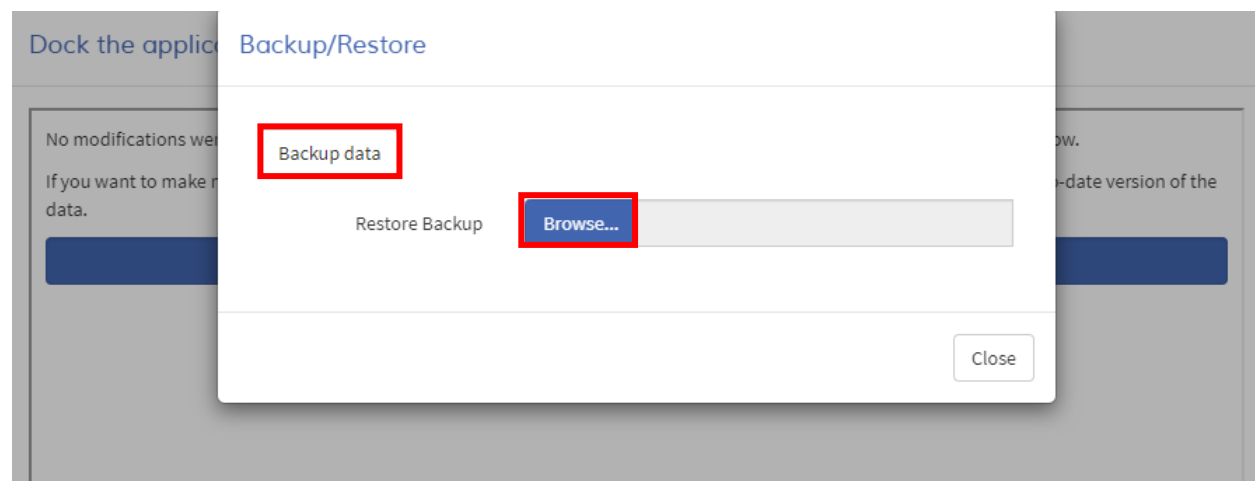
Success

Backup/Restore

Cancel

If you want to backup the changes you made in your offline application, you may click on the “Backup / Restore” button. It will create a zip file of the changes you made.

You may also restore that backup at a later time. Click on the “Backup / Restore” button then on the “Browse” button. Select the backup (a .zip file) you previously created.





### EMSA - Enhanced Maritime Situational Awareness

Once you are back into the main application (“docked” – online), you can zoom into the area where you added the observations offline and they will appear in the application.

You can click on one of the new observations to confirm.

Please note the symbols on the map may not match the ones in the legend. This is a known bug at the time of writing this tutorial.

Community Observation

2 records found.

Actions	Icon	Observation	Category	Picture	Video	Latitude
		TEST 1	Accident			
		TEST 2	Accident			

Layers

- Maritime Network
- Community Observation  
2 records found.  
 Location
- Base layers